

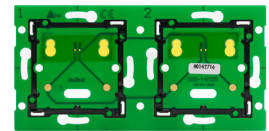
Double horizontal wall-mounted printed circuit board for Niko Home Control for use with connection unit, Centre-to-centre distance: – horizontal coupling and vertical coupling with centre-to-centre distance 71 mm – horizontal connection of several bases is quick and perfect thanks to the

550-14020

4 year warranty

The wall-mounted printed circuit board is mounted on a simple standard flush-mounting box with screw attachment and, together with the connection unit, forms the connection between the controller and the installation. No additional flush-mounting boxes are required for the assembly of multiple faceplates. From this flush-mounting box, you have the option of mounting multiple surround plates underneath, above, to the left or to the right of it without having to mount any additional flush-mounting boxes. For flush-mounting boxes without screw attachment, you must order a set of claws separately. Caution: a connection unit should always be ordered with wall-mounted printed circuit boards. The connection unit provides the connection between the wall-mounted printed circuit board and the system.

This article is protected by at least one patent (application). For more info on patents, see www.niko.eu/innovation.



Technical data

Double horizontal wall-mounted printed circuit board for Niko Home Control for use with connection unit, Centre-to-centre distance: – horizontal coupling and vertical coupling with centre-to-centre distance 71 mm

- horizontal connection of several bases is quick and perfect thanks to the folded-up dovetails on the left and right side
- extra robustness due to the folded-up edges on the outside of the base and the continuation to the inside of the base
- Function: A wall-mounted printed circuit board includes all the electrical and mechanical components required to connect one or several push buttons to the Niko Home Control installation. Niko offers horizontal, vertical, single or multiple printed circuit boards. Choose the type of printed circuit board depending on the number of control buttons required and on a horizontal or vertical assembly. The printed circuit board can be easily replaced by a larger one at a later stage if the need arises to expand the installation. You need one connection unit for each multiple wall-mounted printed circuit board you wish to connect. Connection units are available separately. The connection unit includes a double plug-in connector; The connection unit includes a double plug-in connector, which allows you to connect the bus cable and establish a connection to the next control element. The connector has two contacts with two openings each.
- Fixing method
 - use a set of claws if no screw holes are provided in the flush-mounting box. Sets of claws for single and multiple wall-mounted printed circuit boards are available separately.
- Centre-to-centre distance
 - horizontal coupling and vertical coupling with centre-to-centre distance 71 mm
 - horizontal connection of several bases is quick and perfect thanks to the folded-up dovetails on the left and right side
 - extra robustness due to the folded-up edges on the outside of the base and the continuation to the inside of the base
- Dimensions (HxWxD): 71 mm
- Material upperframe: Material: epoxy

niko

- Material thickness: 1 mm

- Marking: CE

