

# Motion detector, 230 V, 8 m, 180°, wall detector, for flush-mounting box, gold coated

221-78010

4 year warranty

With this integrated indoor motion detector with a 10 A, 230 V switching contact, you have a viewing angle of 180° (horizontal) and 60° (vertical) within which all movement is detected. When a motion is detected, pre-selected lights are activated.

Finishing colour: gold coated

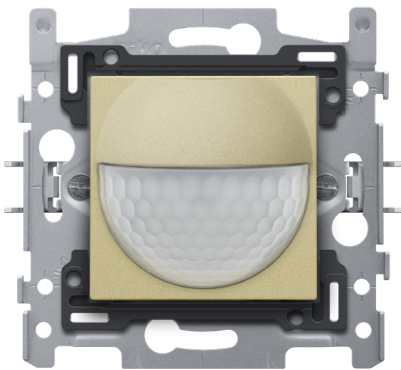
Compatible secondary detectors: XXX-78010

This article is protected by at least one patent (application). For more info on patents, see [www.niko.eu/innovation](http://www.niko.eu/innovation).

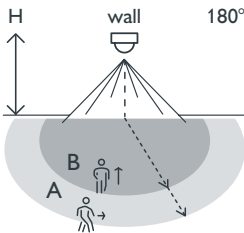
- Sustainable
- Compact
- Simple installation
- Discreet
- The motion detector can be used as a master or secondary detector.




Motion detector for residential use for small rooms, toilets, storerooms, cellars, etc.

- The lighting remains on while motion is detected.
- The built-in time switch allows you to set the desired switch-off delay. The lighting will remain on throughout the disconnection time after the last movement has been detected.
- The lighting can stay on for four hours if you press the button located above the sensor. You can also connect a push button or external switch on this motion detector if you need to be able to control the lighting circuit manually.
- Can be integrated into all Niko central plates.



Detection range



| H   | A<br>Across   | B<br>Towards  |
|---|---|---|
|  |  |  |
| 0.8 m   | 7 m   | 2.4 m   |
| 1 m   | 8 m   | 3 m   |
| 1.2 m   | 9 m   | 4 m   |

  
230 V

  
master/  
secondary

  
8 m from  
a height of  
1 m

  
0.8 – 1.2 m

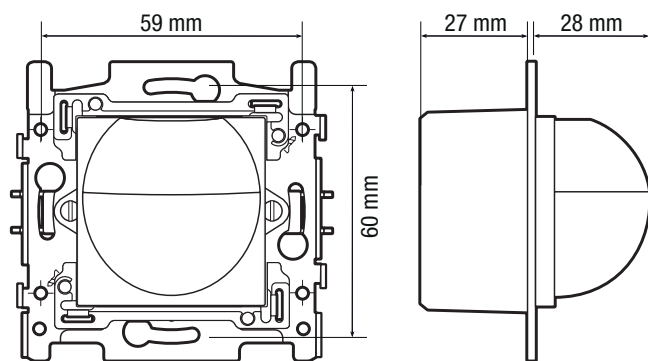
  
flush-  
mounting  
box

**niko**

## Technical data

|  |   |
|--|---|
| Article number   | 221-78010   |
| Input voltage  | 230 Vac $\pm$ 10 %, 50 Hz                               |
| Detector output  | 230 V (ON/OFF)  |
| Maximum MCB rating   | 10 A (limited by national installation rules)           |
| Maximum load incandescent and halogen lamps ( $\cos\phi = 1$ ) | 2300 W  |
| Maximum load fluorescent lamps ( $\cos\phi \geq 0.5$ )         | 1380 VA   |
| Maximum load LED lamps 230 V                                   | 230 W   |
| Light intensity range  | 10 lux – 1000 lux                                       |
| Ambient temperature  | -5 – +45 °C   |
| Switch-off delay   | 1 min – 30 min  |
| Detection range (PIR)  | 8 m from a height of 1 m                                |
| Ambient temperature  | -5 – +45 °C   |
| Mounting method  | flush-mounting box                                      |
| Mounting height  | 0.8 – 1.2 m   |
| Minimum flush-mounting depth                                   | 40 mm   |
| Colour   | enamelled gold (approximately NCS S 3020 - Y, RAL 1000) |
| Dimensions (HxWxD)   | 71 x 73 mm  |
| Wire capacity  | 1 x 2.5 mm <sup>2</sup>                                 |
| Protection degree  | IP20  |
| Protection degree  | IP40 for the combination of a mechanism and faceplate   |
| Marking  | CE  |

## Dimensions



## Wiring diagram

