

# Hotel card switch, base, screw terminals and finishing set greige

104-61900

4 year warranty

Compound flush-mounted switch (base and finishing set). The base is equipped with screw terminals and claw fixing. This switch is almost exclusively used in hotel rooms. On the top of the switch, you can insert the hotel card. The lens indicates that you can operate the light in your room. Finishing colour: greige

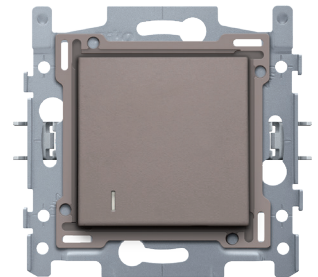
## Technical data

Hotel card switch, base, screw terminals and finishing set greige.

- Protection degree: IP20
- Protection degree: IP41 for the combination of a mechanism, central plate and faceplate
- The combination of a mechanism, a central plate and a faceplate has an impact-resistance of IK06
- Battery: NA
- Marking: CE

N.O. or N.C. push button with 4 connection terminals, 10 A/250 Vac, screw terminals.

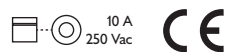
- Function: – push button
  - block-shaped silver contacts (cadmium-free) in the form of a cross
- Protection degree: IP41 for the combination of a mechanism, central plate and faceplate
- Impact resistance: The combination of a mechanism, a central plate and a faceplate has an impact-resistance of IK06
- Material base
  - ureumformaldehyde (UF) with high heat resistance
  - white RAL9010 (approximately)
- Flush-mounting frame
  - 1 mm-thick metal
  - galvanized on all sides after cutting, even on the cut edges
  - with 4 grooves with screw hole of 7 mm
  - with 4 screw holes (indicated by a screw symbol) with a diameter of 3 mm for mounting on panels
- Fixing method
  - simple mounting in a flush-mounting box with grip surfaces
  - with claws that rotate open using screws with a combination screwhead (Pz1 or slot 1 x 5 mm), for mounting in a flush-mounting box with grip surfaces
  - engagement depth of claws: 31 mm
  - claws can be pushed back into their original position
  - claws can be easily pushed out using a screwdriver
- Centre-to-centre distance
  - Simple and quick assembly of one or more mechanisms by the indication (chalk line, laser, etc.) of the



- centre of the flush-mounting frame
- vertical coupling centre-to-centre distance 60 mm by sliding several bases into each other, they lock themselves automatically
- vertical coupling centre-to-centre distance 71 mm using pre-formed lips at the bottom, by folding the lips downwards over a length of 1 mm, the bases support each other and the centre-to-centre distance is guaranteed.
- horizontal connection of multiple bases is quick and perfect thanks to the folded-up dovetails on the left and right sides
- extra robustness due to the folded-up edges on the outside of the base and the continuation into the inside of the base
- End border: 4 rectangular openings (7 x 2.5 mm) which, if the flush-mounting box protrudes from the plasterwork, can compensate for a margin of between 1 and 1.2 mm, so that the faceplate can still butt up perfectly against the wall
- Extra terminal
  - provided with a fourth terminal allowing the connection of a lighting unit
- Wire connection
  - the sockets are fitted with cage clamps with permanent screws with combination screwheads (Pz1 or slot 1 x 5 mm)
  - every screw is provided with a screwdriver slot that prevents the screwdriver from sliding off the screwhead.
- Wire capacity
  - all connection terminals at the top side of the base
  - up to 2 x 2.5 mm<sup>2</sup> wire per terminal
- Stripping length
  - 8 mm stripping length
  - indelibly indicated at the rear side: stripping length and wiring diagram
  - indelibly indicated at the front side: terminals and switch symbol
- Lighting element
  - the base is provided with 2 rectangular recesses for a lighting unit
  - left recess (front view): a lighting unit with wires or an automatic lighting unit can be clicked in
  - rear side: round recesses for direct contact of the automatic lighting unit with the mechanism
- Ambient temperature: -5 – +40 °C
- Certification marks: CEBEC, NF
- Marking: CE

Finishing set for hotel card switch, greige. This central plate is surrounded with a flat edge that is equipped at all 4 corners with a rectangular opening, each containing a multi-positional snap hook. The construction of the central plate ensures that the faceplate can always be attached flat to the wall, even in cases of untidy plasterwork. This works in two directions: If the flush-mounting box sticks out of the plasterwork, the multi-positional snap hooks can compensate for a 1 to 1.2 mm margin; if the flush-mounting box is sunk too deeply in the plasterwork, the snap hooks can compensate for up to a 1.8 mm margin. The flat edge around the central plate also has 4 round openings that ensure the correct positioning of the faceplate in relation to the central plate. After mounting all components (faceplate, finishing set and switch), no metal parts are visible thanks to the flat edge of the central plate.

- Function: First, the intermediate plate is clicked onto the mechanism. Afterwards, the central plate is clicked onto the mechanism. The central plate is also equipped with a window and has a slot for a hotel card. Suitable cards: width: min. 45 mm / max. 60 mm, thickness: min. 0.75 mm / max. 1.2 mm.
  - Material central plate: The central plate is enamelled and made of rigid PC and ASA.
  - Colour: greige (coloured in mass, approximately NCS S 5005 - Y50R, RAL 080 60 05)
  - Lens: The key on the push button is fitted at the bottom with a small amber-coloured LED (1.5 x 1.5 mm) to indicate the status of the action.
  - Dismantling: For dismantling the central plate, the flat edge is equipped with two notches indicated by a screwdriver symbol. The central plate can easily be dismantled using a slotted screwdriver.
  - Protection degree: IP41 for the combination of a mechanism, central plate and faceplate
  - Impact resistance: The combination of a mechanism, a central plate and a faceplate has an impact-resistance of IK06
  - Fire safety
    - The plastic parts of the central plate are self-extinguishing (comply with a filament test of 650°C)
    - The plastic parts of the central plate are halogen-free.
  - Dimensions of finishing with flat edge: 56 x 56 mm (HxW)
- Dimensions of visible area of finishing: 45 x 45 mm (HxW)
- Dimensions (HxWxD): 55.8 x 55.8 x 10.5 mm
  - Certification marks: CEBEC
  - Marking: CE



## Wiring diagram

