

Base for fourfold, potential-free push button, 24 V N.O. with amber LED, screw fixing

170-40151

4 year warranty

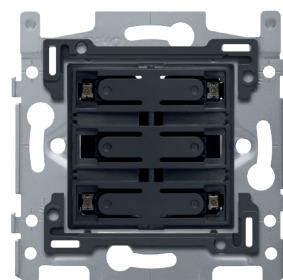
Mechanism for fourfold potential-free push button, 24 V N.O. with screw fixing. This mechanism is equipped with an amber LED. A finishing set in the colour of your choice must be ordered separately. This article is protected by at least one patent (application). For more info on patents, see www.niko.eu/innovation.

Faster and easier installation:

- all connections terminals are located at the top of the base:
 - to ensure all wires can be cut and stripped at the same length
 - to guarantee more space under the mechanism, so you can easily fold the wires and place the mechanism in the flush-mounting box without the wiring pushing it back up.

Niko quality:

- metal base is held firmly in place, even on uneven walls, doesn't break and is not subject to stress cracking (small ruptures)



Technical data

Base for fourfold, potential-free push button, 24 V N.O. with amber LED, screw fixing.

- Number of control buttons: The base and the two LED lighting strips of the fourfold, potential-free push button are made of polycarbonate. In addition to the 4 control buttons (upper left and right and lower left and right), the mechanism is equipped in the middle on the front with snap hooks which hold the two keys and a finishing plate (with or without text field) in place. In addition, the mechanism is also equipped with two LED lighting strips. When the LEDs are connected, the 2 uppermost and the 2 lowermost standing studs are illuminated. The LEDs can be connected as indicators or as feedback.
- Protection degree: IP41 for the combination of a mechanism, central plate and faceplate
- Impact resistance: The combination of a mechanism, a central plate and a faceplate has an impact-resistance of IK06
- Connector block: On its back side, the mechanism is equipped with connector blocks: one for the connection of the fourfold, potential-free push button and one for the connection of the LEDs.
- Flush-mounting frame
 - 1 mm-thick metal
 - galvanized on all sides after cutting, even on the cut edges
 - with 4 grooves with screw hole of 7 mm
 - with 4 screw holes (indicated by a screw symbol) with a diameter of 3 mm for mounting on panels
- Fixing method
 - with screws for simple fixing in a flush-mounting box with grip surfaces
- Centre-to-centre distance
 - Simple and quick assembly of one or more mechanisms by the indication (chalk line, laser, etc.) of the centre of the flush-mounting frame

niko

- vertical coupling centre-to-centre distance 60 mm by sliding several bases into each other, they lock themselves automatically
- vertical coupling centre-to-centre distance 71 mm using pre-formed lips at the bottom, by folding the lips downwards over a length of 1 mm, the bases support each other and the centre-to-centre distance is guaranteed.
- horizontal connection of multiple bases is quick and perfect thanks to the folded-up dovetails on the left and right sides
- extra robustness due to the folded-up edges on the outside of the base and the continuation into the inside of the base
- End border: The flush-mounting frame is equipped, both on the top and the bottom, with a dark grey, plastic end border. This border is made of PC+ASA and is joined to the flush-mounting frame using a melting process. The corners of the two end borders are equipped with rectangular openings (7.9 x 1.5 mm) each containing a multi-positional snap hook. Thanks to the snap hooks, the 4 rectangular openings ensure that the faceplate can always be attached flat to the wall, even in cases of untidy plasterwork. This works in two directions: If the flush-mounting box sticks out of the plasterwork, the multi-positional snap hooks can compensate for a 1 to 1.2 mm margin; if the flush-mounting box is sunk too deeply in the plasterwork, the snap hooks can compensate for up to a 1.8 mm margin. The end borders also have 4 round openings that ensure the correct positioning of the faceplate in relation to the central plate.
- Wire connection
 - each connector block is equipped with cage clamps with permanent screws with a slotted screwhead (slot 0.6 x 3.5 mm)
 - every screw is provided with a screwdriver slot that prevents the screwdriver from sliding off the screwhead.
- Wire capacity
 - the connection terminals have a terminal capacity of min. 0.5 mm and max. 0.8 mm.
- Ambient temperature: -5 – +40 °C
- Dimensions (HxWxD): 71 x 73 mm
- Marking: CE



Wiring diagram

