

# WAGO WINSTA® distribution box, ON/OFF, P48 DALI-2

353-70802

4 year warranty

This distribution box supports control of non-dimmable luminaires. It can be used in combination with P48 DALI-2 master detectors with two WAGO WINSTA® cables and connectors. Extend your installation with distribution box 353-70804 to divide the power distribution to the DALI luminaires over two circuit breakers and achieve a higher security of supply. External connectors for 230 V power supplies, 230 V push buttons and 230 V non-dimmable luminaires are included. Each connector is unique, which helps to avoid installation errors and save time.

Finishing colour: black



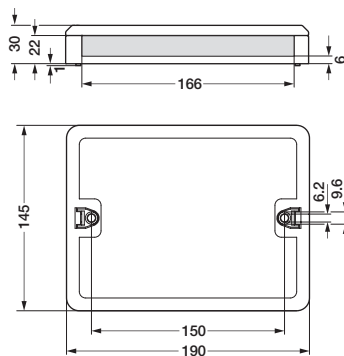
## Technical data

WAGO WINSTA® distribution box, ON/OFF, P48 DALI-2

- Ambient temperature: -35 – +85 °C
- Protection degree: IP20
- Weight: 407 g
- Dimensions (HxWxD): 30 x 190 x 145 mm
- Marking: CE



## Dimensions



Wiring diagram

