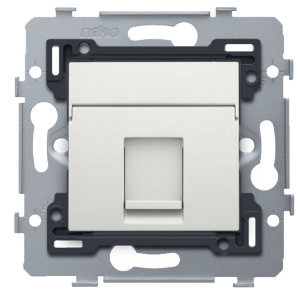


1 RJ45 connection STP Cat. 5E, flat model, incl. base 71 x 71 mm with screw fixing and finishing set, white

101-75255

4 year warranty

Compound socket outlet (base and finishing set) with 1 RJ45 connection point STP Cat. 5E to create a network connection with 1 appliance for telephone, Ethernet, IP or internet applications. The socket outlet is connected in a star configuration to the central connection cabinet using a cable of the same performance type. The shielding ensures a more malfunction-resistant connection. The base has internal dimensions of 45 x 45 mm and external dimensions of 71 x 71 mm and is equipped with screw fixing. Finishing colour: white. This article is protected by at least one patent (application). For more info on patents, see www.niko.eu/innovation.



Technical data

1 RJ45 connection STP Cat. 5E, flat model, incl. base 71 x 71 mm with screw fixing and finishing set, white.

- Protection degree: IP20
- Protection degree: IP41 for the combination of a mechanism, central plate and faceplate
- The combination of a mechanism, a central plate and a faceplate has an impact-resistance of IK06
- Dimensions (HxWxD): 73 x 73 x 37 mm
- Marking: CE

1 RJ45 connection STP Cat. 5E, flat model, incl. base 71 x 71 mm with screw fixing.

- Protection degree: IP41 for the combination of a mechanism, central plate and faceplate
- The combination of a mechanism, a central plate and a faceplate has an impact-resistance of IK06
- Dimensions (HxWxD): 73 x 73 x 33.2 mm
- Marking: CE

Universal base for 45 x 45 mm functions.

- Protection degree: IP41 for the combination of a mechanism, central plate and faceplate
- Impact resistance: The combination of a mechanism, a central plate and a faceplate has an impact-resistance of IK06
- Flush-mounting frame
 - 1 mm-thick metal
 - galvanized on all sides after cutting, even on the cut edges
 - with 4 grooves with screw hole of 7 mm
 - with 4 screw holes (indicated by a screw symbol) with a diameter of 3 mm for mounting on panels
- Fixing method
 - with screws for simple fixing in a flush-mounting box with grip surfaces
- Centre-to-centre distance

- horizontal coupling and vertical coupling with centre-to-centre distance 71 mm
- horizontal connection of several bases is quick and perfect thanks to the folded-up dovetails on the left and right side
- extra robustness due to the folded-up edges on the outside of the base and the continuation to the inside of the base
- End border: The flush-mounting frame is equipped, both on the top and the bottom, with a dark grey, plastic end border. This border is made of PC+ASA and is joined to the flush-mounting frame using a melting process. The corners of the two end borders are equipped with rectangular openings (7.9 x 1.5 mm) each containing a multi-positional snap hook. Thanks to the snap hooks, the 4 rectangular openings ensure that the faceplate can always be attached flat to the wall, even in cases of untidy plasterwork. This works in two directions: If the flush-mounting box sticks out of the plasterwork, the multi-positional snap hooks can compensate for a 1 to 1.2 mm margin; if the flush-mounting box is sunk too deeply in the plasterwork, the snap hooks can compensate for up to a 1.8 mm margin. The end borders also have 4 round openings that ensure the correct positioning of the faceplate in relation to the central plate.
- Ambient temperature: -5 – +40 °C
- Dimensions (HxWxD): 73 x 73 mm
- Marking: CE

Adaptor 9.1, single, flat for RJ connectors 650-450xx

- Dimensions (HxWxD): 20.7 x 44.8 x 20.1 mm
- Impact resistance: The combination of a mechanism, a central plate and a faceplate has an impact-resistance of IK06
- Marking: CE

Shielded RJ45 connector STP Cat. 5E, for bandwidths up to 100MHz

- maximum input current: $I(P_{max}) = 14mA$ - permissible ambient temperature: 0 to 40°C
- Impact resistance: The combination of a mechanism, a central plate and a faceplate has an impact-resistance of IK06
- Marking: CE

Central plate data 1x RJ, white.

- Material central plate: The central plate is made of rigid PC and ASA. The base material is coloured in mass.
- Colour: white (coloured in mass, approximately NCS S 0502 - Y50R, RAL 9010)
- Text field: At the top, the central plate is equipped with a hinged, non-transparent window with label. Dimensions label: 9.5 x 42.4 mm.
- Dismantling: To dismount simply pull the central plate off the mechanism.
- Protection degree: IP41 for the combination of a mechanism, central plate and faceplate
- Impact resistance: The combination of a mechanism, a central plate and a faceplate has an impact-resistance of IK06
- Fire safety
 - the plastic parts of the central plate are self-extinguishing (comply with a filament test of 650 °C)
 - the plastic parts of the central plate are halogen-free
- Dimensions of finishing: 45 x 45 mm (HxW)
- Dimensions (HxWxD): 44.5 x 44.7 x 8.6 mm
- Marking: CE

