

Base for 6A push button N.O. with amber LED with E10 lamp base, claw fixing

170-04000

4 year warranty

Mechanism for a 6A push button N.O., with claw fixing. This push button is equipped with an amber LED with an E10 lamp base. A finishing set and faceplate in the colour of your choice must be ordered separately. The contact material contains cadmium oxide.

This article is protected by at least one patent (application). For more info on patents, see www.niko.eu/innovation.

Faster and easier installation:

- all connections terminals are located at the top of the base:
 - to ensure all wires can be cut and stripped at the same length
 - to guarantee more space under the mechanism, so you can easily fold the wires and place the mechanism in the flush-mounting box without the wiring pushing it back up.

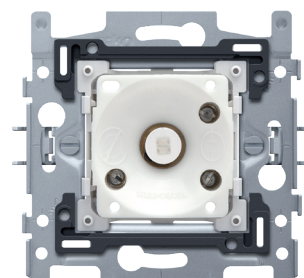
Niko quality:

- metal base is held firmly in place, even on uneven walls, doesn't break and is not subject to stress cracking (small ruptures)
- firm metal claws with a large engagement depth (31 mm) remain fixed when mounted and can be screwed tightly to ensure that the socket outlets can remain fixed in the wall for a longer time and to avoid the mechanisms should become warped

Technical data

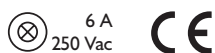
Base for 6A push button N.O. with amber LED with E10 lamp base, claw fixing.

- Number of control buttons: 1 control button
- Maximum MCB rating: 6 A (limited by national installation rules)
- Protection degree: IP41 for the combination of a mechanism, central plate and faceplate
- Impact resistance: The combination of a mechanism, a central plate and a faceplate has an impact-resistance of IK06
- Material base
 - impact-resistant, dust-proof and dimensionally stable polycarbonate
 - light grey RAL 7035
- Flush-mounting frame
 - 1 mm-thick metal
 - galvanized on all sides after cutting, even on the cut edges
 - with 4 grooves with screw hole of 7 mm
 - with 4 screw holes (indicated by a screw symbol) with a diameter of 3 mm for mounting on panels
- Flush mounting depth: 24.5 mm
- Fixing method
 - simple mounting in a flush-mounting box with grip surfaces
 - with claws that rotate open using screws with a combination screwhead (Pz1 or slot 1 x 5 mm), for



niko

- mounting in a flush-mounting box with grip surfaces
 - engagement depth of claws: 31 mm
 - claws can be pushed back into their original position
 - claws can be easily pushed out using a screwdriver
- Centre-to-centre distance
 - Simple and quick assembly of one or more mechanisms by the indication (chalk line, laser, etc.) of the centre of the flush-mounting frame
 - vertical coupling centre-to-centre distance 60 mm by sliding several bases into each other, they lock themselves automatically
 - vertical coupling centre-to-centre distance 71 mm using pre-formed lips at the bottom, by folding the lips downwards over a length of 1 mm, the bases support each other and the centre-to-centre distance is guaranteed.
 - horizontal connection of multiple bases is quick and perfect thanks to the folded-up dovetails on the left and right sides
 - extra robustness due to the folded-up edges on the outside of the base and the continuation into the inside of the base
- End border: The flush-mounting frame is equipped, both on the top and the bottom, with a dark grey, plastic end border. This border is made of PC+ASA and is joined to the flush-mounting frame using a melting process. The corners of the two end borders are equipped with rectangular openings (7.9 x 1.5 mm) each containing a multi-positional snap hook. Thanks to the snap hooks, the 4 rectangular openings ensure that the faceplate can always be attached flat to the wall, even in cases of untidy plasterwork. This works in two directions: If the flush-mounting box sticks out of the plasterwork, the multi-positional snap hooks can compensate for a 1 to 1.2 mm margin; if the flush-mounting box is sunk too deeply in the plasterwork, the snap hooks can compensate for up to a 1.8 mm margin. The end borders also have 4 round openings that ensure the correct positioning of the faceplate in relation to the central plate.
- Extra terminal
 - provided with a third terminal allowing the connection of a lighting unit
- Wire connection
 - each connector block is equipped with cage clamps with permanent screws with a slotted screwhead (slot 1 x 4.5 mm)
 - every screw is provided with a screwdriver slot that prevents the screwdriver from sliding off the screwhead.
- Wire capacity
 - up to 2 x 2.5 mm² wire per terminal
- Ambient temperature: -5 – +40 °C
- Dimensions (HxWxD): 71 x 73 mm
- Certification marks: CEBEC, NF
- Marking: CE



Wiring diagram

