

Presence / Motion detectors
P41/P42/P46/P47/P49/M42 MR/LR



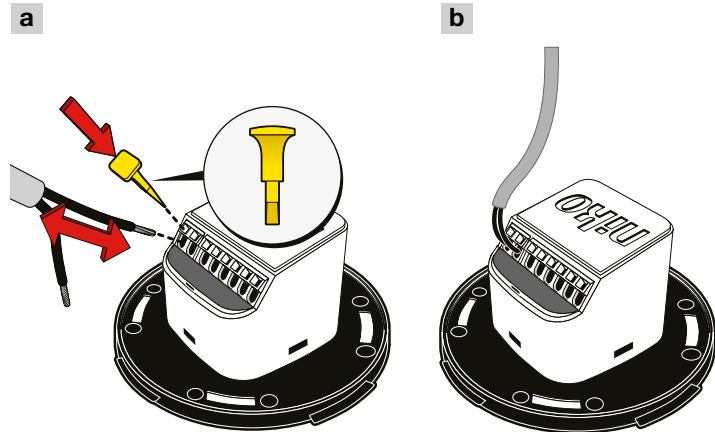
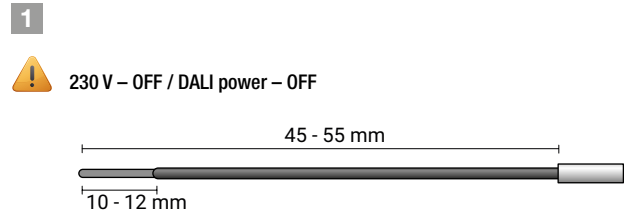
4 year warranty

353-600021	353-650021	353-750621	353-700121	353-750521
353-600111	353-650321	353-700021	353-750021	353-750621
353-600121	353-650521	353-700111	353-750321	

EN	P41/P42/P46/P47/P49/M42 MR/LR, 360°, for flush-mounting box
NL	P41/P42/P46/P47/P49/M42 MR/LR, 360°, voor inbouwdoos
FR	P41/P42/P46/P47/P49/M42 MR/LR, 360°, pour boîte d'encastrement
DE	P41/P42/P46/P47/P49/M42 MR/LR, 360°, für Unterputzdose
DK	P41/P42/P46/P47/P49/M42 MR/LR, 360°, til indbygningsdåse
SE	P41/P42/P46/P47/P49/M42 MR/LR, 360°, för infälld dosa
NO	P41/P42/P46/P47/P49/M42 MR/LR, 360°, til innfelt monteringsboks
IT	P41/P42/P46/P47/P49/M42 MR/LR, 360°, per scatola da incasso
PL	P41/P42/P46/P47/P49/M42 MR/LR, 360°, do montażu w puszcze podtynkowej
SK	P41/P42/P46/P47/P49/M42 MR/LR, 360°, na montáž do zapustenej montážnej krabice

Installation

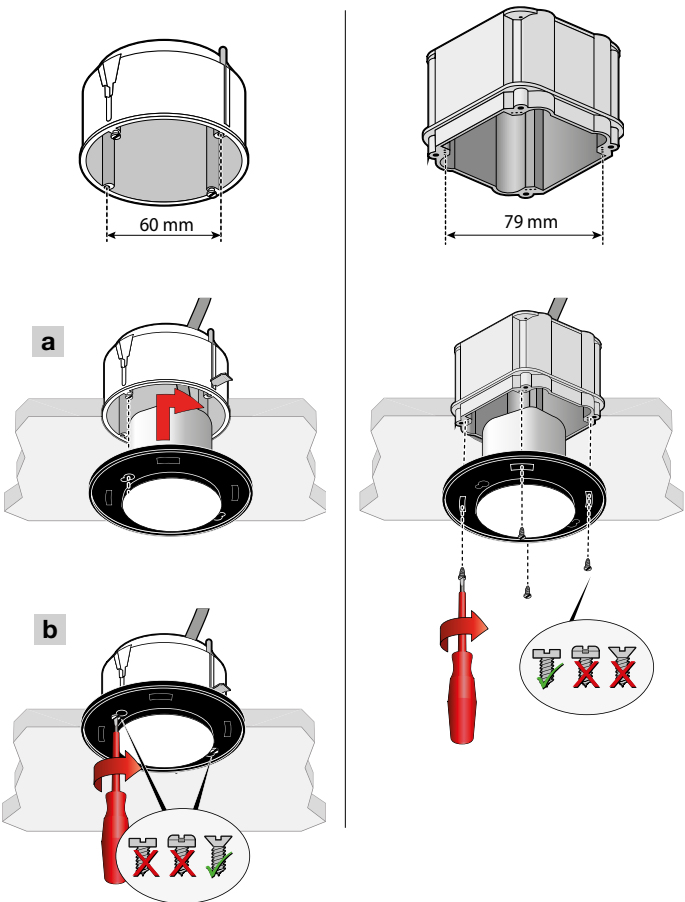
Installatie / Installation / Installation / Installation / Installation / Installasjon / Installazione / Instalacja / Inštalácia



PM353-P4XM4X-FMB

2-1

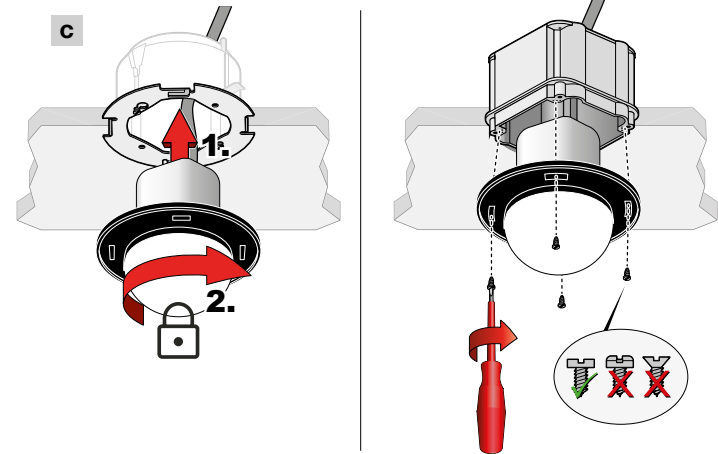
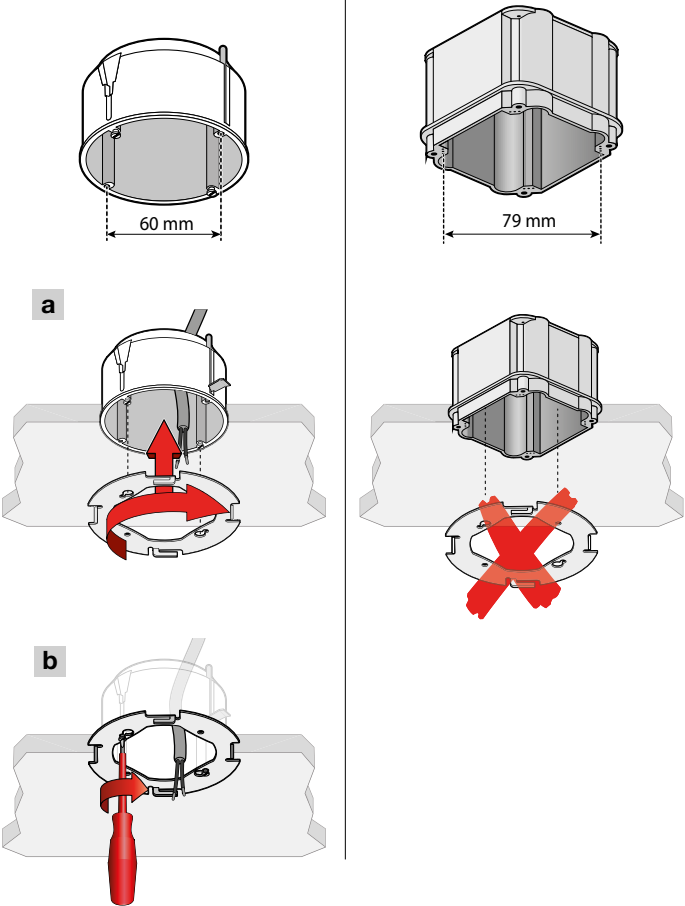
Medium range (MR)



Continue to step 3

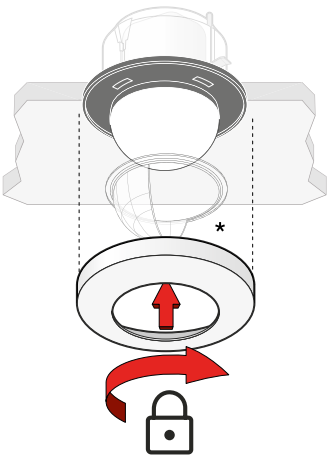
2-2

Long range (LR)



3

Medium range (MR) / Long range (LR)



* A lens cover is optional and only suitable for specific detectors.
Check compatibility in the specifications of the lens cover at www.niko.eu

Wiring

Aansluitschema / Schéma de raccordement / Verdrahtung / Tilslutningsskema / Kopplingschema /
Ledningstilkopling / Cablaggio / Okablowanie / Inštalácia

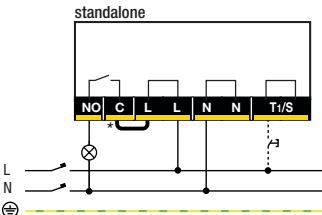
⚠ This product must be secured with a miniature circuit breaker (MCB) of max. 16 A in the electrical cabinet. The MCB rating is limited by national installation rules.

230 V detectors

Standalone

⚠ 230 V – OFF

353-600111, 353-600121, 353-700111 or 353-700121 acts as standalone detector in the following configuration:

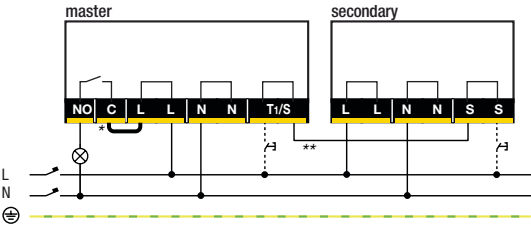


* Remove if you want to use the contact as a dry contact (potential-free)

Master – secondary

⚠ 230 V – OFF

353-600121 or 353-700121 acts as master detector in the following configuration:



Compatible secondary detectors (flush mounting box): **353-600021, 353-700021**.
For all compatible articles, see www.niko.eu

* Remove if you want to use the contact as a dry contact (potential-free)

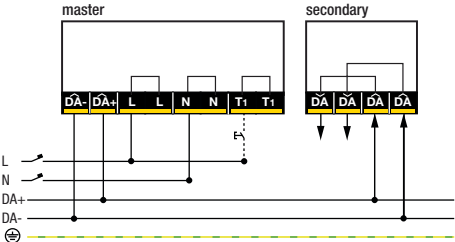
** A wired connection between the master and secondary detector is optional. Choose either the wired connection or communication via Bluetooth®.

DALI detectors

Master – secondary

⚠ 230 V – OFF / DALI power – OFF

353-650321 or 353-750321 acts as master detector in the following configuration:

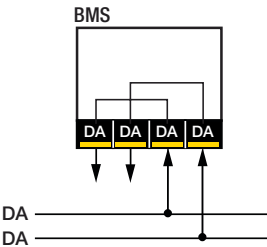


Compatible secondary detectors (flush mounting box): **353-650021, 353-650621, 353-750021, 353-750621**.
For all compatible articles, see www.niko.eu

BMS

⚠ DALI power – OFF

353-650521 or 353-750521 acts as BMS detector in the following configuration:



Specifications

Specificaties / Specifications / Spezifikationen / Specifikationer / Specifikationer / Spesifikasjoner / Specifiche / Specyfikacje / Technické údaje

		353-600021	353-600111	353-600121	353-650021	353-650321	353-650521	353-650621	353-700021	353-700111	353-700121	353-750021	353-750321	353-750521	353-750621
		P41	M42	P42	P46	P47	P49	P46	P41	M42	P42	P46	P47	P49	P46
Installation	230 V	x	x	x					x	x	x				
	DALI-2				x	x	x	x				x	x	x	x
Configuration	standalone		x							x					
	master / standalone			x		x					x		x		
	secondary	x			x			x	x			x			x
	BMS				x		x					x		x	
Mounting height	2 – 3.5 m	x	x	x	x	x	x	x	x	x	x	x	x	x	x
Wire capacity	1.5 / 2.5 mm²	x	x	x	x	x	x	x	x	x	x	x	x	x	x
Maximum number of secondary detectors*	10			x							x				
	2					x							x		
Input voltage	230 Vac ± 10 %, 50 Hz	x	x	x		x			x	x	x		x		
	via the DALI bus				x		x	x				x		x	x
Operating frequency	2.4 GHz	x	x	x	x	x	x	x	x	x	x	x	x	x	x
	Maximum power consumption	0.2 W	x	x	x				x	x	x				
	0.5 W					x							x		
	Maximum voltage on the DALI bus					x							x		
Maximum supply current**	250 mA					x							x		
Maximum guaranteed current on DALI bus	100 mA					x							x		
Maximum startup time DALI	< 1200 ms				x	x	x	x				x	x	x	x
Maximum PIR detection startup time	70 s				x	x	x	x				x	x	x	x
Maximum number of control gear on the DALI bus	64					x							x		
Maximum number of dimmable zones	3					x							x		
Maximum current consumption	10 mA						x							x	
	28.1 mA				x			x				x			x
Nominal current consumption (12 V, 25°C) Bluetooth® enabled	4 mA						x							x	
	8.1 mA				x			x				x			x
Nominal current consumption (12 V, 25°C) Bluetooth® disabled	3 mA						x							x	
	5 mA				x			x				x			x
Maximum radio frequency power	-2 dBm	x	x	x	x	x	x	x	x	x	x	x	x	x	x
Ambient temperature	-25 – +40 °C	x	x	x	x	x	x	x	x	x	x	x	x	x	x
Protection degree	IP20	x	x	x	x	x	x	x	x	x	x	x	x	x	x
	Impact resistance	x	x	x	x	x	x	x							
	IK02	x	x	x	x	x	x	x							
	IK04								x	x	x	x	x	x	x
Halogen free	yes	x	x	x	x	x	x	x	x	x	x	x	x	x	x
Marking	CE	x	x	x	x	x	x	x	x	x	x	x	x	x	x

* For DALI-2 master detectors: Be aware of the maximum guaranteed current on the DALI bus.

** It is not permitted to connect additional DALI power supplies to the DALI bus of the DALI-2 master detectors.

Detection area

Detectiebereik / Portée de détection / Erfassungsbereich / Rækkevidde / Detekteringsområde / Övervakningsområde / Campo di rilevamento / Obszar wykrywania / Oblast snímania

	H	A Walking	B Across	C Towards	D Presence
353-600021 353-600121 353-650021 353-650321 353-650521 353-650621	2,5 m 3,0 m	ø 13 m ø 12 m	ø 11 m ø 12 m	ø 3 m ø 3 m	ø 5 m ø 5 m
353-600111	2,5 m 3,0 m	ø 13 m ø 37 m	ø 11 m ø 30 m	ø 3 m ø 8 m	- -
353-700021 353-700121 353-750021 353-750321 353-750521 353-750621	2,5 m 3,0 m	ø 32 m ø 37 m	ø 28 m ø 30 m	ø 10 m ø 8 m	ø 8 m ø 4 m
353-700111	2,5 m 3,0 m	ø 32 m ø 37 m	ø 28 m ø 30 m	ø 10 m ø 8 m	- -

Measured according to EN/IEC63180

Dimensions

Afmetingen / Dimensions / Abmessungen / Dimensioner / Mått / Dimensioner / Dimensioni / Wymiary / Rozmery

Medium Range (MR)

353-600021
353-600111
353-600121
353-650021
353-650321
353-650521
353-650621

Long Range (LR)

353-700021
353-700111
353-700121
353-750021
353-750321
353-750521
353-750621

App settings & more info

App-instellingen / Réglages de l'appli / App-Einstellungen / App indstillinger / Appnställningar / App-innstillinger / Impostazioni dell'app / Ustawienia aplikacji / Nastavenia aplikácie

230 V – ON / DALI power – ON

Bluetooth

GET IT ON
Google Play

Download on the
App Store

The specific hardware manual for each individual product is available in multiple languages on guide.niko.eu

LED behaviour

Ledgedrag / Comportement des LED / LED-Verhalten / LED funktioner / LED-funktioner / LED-funksjon / Comportamento del LED / Zachowanie LED / LED signalizácia

				230 V – ON / DALI power – ON	
Green LED continuous on		Connection OK			
Green LED breathing		Connection OK, overrule ON			
Green LED flashing		Warming up*			Wait
Red LED continuous on		Error			<div>More info**:</div>
Red LED flashing		Warning			
Blue LED flashing		Movement detected during walk test			

* When Bluetooth® communication is disabled, the green LED does not flash while warming up.

** More info / Meer informatie / Plus d'info / Mehr Info / Mere info / Mer information / Mer info / Ulteriore info / Więcej informacji / Viac informácií

Support & contact

nv Niko sa
Industriepark West 40
9100 Sint-Niklaas, Belgium

www.niko.eu		
EN	+32 3 778 90 80	support@niko.eu
NL	België: +32 3 778 90 80	support.be@niko.eu
	Nederland: +31 880 15 96 10	support.nl@niko.eu
FR	Belgique: +32 3 778 90 80	support.be@niko.eu
	France: +33 820 20 66 25	support.fr@niko.eu
DE	Suisse: +41 44 878 22 22	support.ch@niko.eu
	Deutschland: +49 7623 96697-0	support.de@niko.eu
SE	Schweiz: +41 44 878 22 22	support.ch@niko.eu
	Österreich: +43 1 7965514	support.at@niko.eu
SK	Belgien: +32 3 778 90 80	support.be@niko.eu
DK	+45 74 42 47 26	support.dk@niko.eu
SE	+46 8 410 200 15	support.se@niko.eu
NO	+47 66 77 57 50	support.no@niko.eu
IT	+41 44 878 22 22	support.ch@niko.eu
PL	+48 509 378 373	support.pl@niko.eu
SK	+421 2 63 825 155	support.sk@niko.eu

Niko prepares its manuals with the greatest care and strives to make them as complete, correct and up to date as possible. Nevertheless, some deficiencies may subsist. Niko cannot be held responsible for this, other than within the legal limits. Please inform us of any deficiencies in the manuals by contacting Niko customer services at support@niko.eu