

# Combination coax with RJ45 connection UTP Cat. 6, PoE++ ready, flat model, incl. base 60 x 71 mm with claw fixing and finishing set, cream

100-66258

4 year warranty

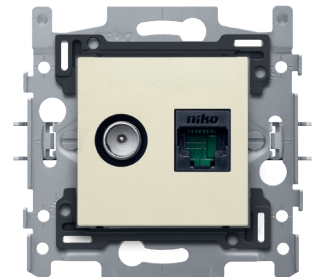
This mechanism with RJ45 connection point UTP Cat. 6, PoE++ ready and coaxial connection is used to make a network connection for telephone, Ethernet, IP, PoE or internet applications.

All connection points of the mechanism are connected in a star configuration to the central connection cabinet using a cable of the same performance type.

The base has internal dimensions of 45 x 45 mm and external dimensions of 60 x 71 mm and is equipped with claw fixing.

A PoE adapter is required to transport both data and power via the connector. A PoE adapter can be both a PoE injector or a PoE splitter. Finishing colour: cream.

This article is protected by at least one patent (application). For more info on patents, see [www.niko.eu/innovation](http://www.niko.eu/innovation).



## Technical data

Combination coax with RJ45 connection UTP Cat. 6, PoE++ ready, flat model, incl. base 60 x 71 mm with claw fixing and finishing set, cream.

- Service: 4PPoE
- PoE standard: IEEE 802.3BT Type 4
- Maximum power Component (at PD): 72 W
- Maximum power Source (at PSE): 100 W
- Voltage range (at PSE): 50.0-57.0 V
- Voltage range (at PD): 42.5-57 V
- Maximum current: 860 mA
- Pairs with current: 4
- Maximum cable resistance per pair set: 12.5  $\Omega$
- Power management: Three power class levels negotiated by signature or 0.1 W steps negotiated by LLDP
- Derating of maximum cable ambient operating temperature: 10 °C (20 °F) with more than half of bundled cables at I<sub>max</sub>
- Supported cabling: Category 5
- Supported modes: Mode A, Mode B, 4-pair mode
- Protection degree: IP20
- Protection degree: IP41 for the combination of a mechanism, central plate and faceplate
- The combination of a mechanism, a central plate and a faceplate has an impact-resistance of IK06
- Dimensions (HxWxD): 71 x 73 x 37 mm
- Certification marks: Telenet-Wyre & VOO
- Marking: CE

Combination coax with RJ45 connection UTP Cat. 6, PoE++ ready, flat model, incl. base 60 x 71 mm with claw fixing.

- Service: 4PPoE

**niko**

100-66258 - 31 - 10-2024

- PoE standard: IEEE 802.3BT Type 4
- Maximum power Component (at PD): 72 W
- Maximum power Source (at PSE): 100 W
- Voltage range (at PSE): 50.0-57.0 V
- Voltage range (at PD): 42.5-57 V
- Maximum current: 860 mA
- Pairs with current: 4
- Maximum cable resistance per pair set: 12.5  $\Omega$
- Power management: Three power class levels negotiated by signature or 0.1 W steps negotiated by LLDP
- Derating of maximum cable ambient operating temperature: 10 °C (20 °F) with more than half of bundled cables at I<sub>max</sub>
- Supported cabling: Category 5
- Supported modes: Mode A, Mode B, 4-pair mode
- Protection degree: IP41 for the combination of a mechanism, central plate and faceplate
- The combination of a mechanism, a central plate and a faceplate has an impact-resistance of IK06
- Dimensions (HxWxD): 71 x 73 x 40.5 mm
- Certification marks: Telenet-Wyre & VOO
- Marking: CE

Universal base for 45 x 45 mm functions.

- Impact resistance: The combination of a mechanism, a central plate and a faceplate has an impact-resistance of IK06
- Flush-mounting frame
  - 1 mm-thick metal
  - galvanized on all sides after cutting, even on the cut edges
  - with 4 grooves with screw hole of 7 mm
  - with 4 screw holes (indicated by a screw symbol) with a diameter of 3 mm for mounting on panels
- Fixing method
  - simple mounting in a flush-mounting box with grip surfaces
  - with claws that rotate open using screws with a combination screwhead (Pz1 or slot 1 x 5 mm), for mounting in a flush-mounting box with grip surfaces
  - engagement depth of claws: 31 mm
  - claws can be pushed back into their original position
  - claws can be easily pushed out using a screwdriver
- Centre-to-centre distance
  - Simple and quick assembly of one or more mechanisms by the indication (chalk line, laser, etc.) of the centre of the flush-mounting frame
  - vertical coupling centre-to-centre distance 60 mm by sliding several bases into each other; they lock themselves automatically
  - vertical coupling centre-to-centre distance 71 mm using pre-formed lips at the bottom, by folding the lips downwards over a length of 1 mm, the bases support each other and the centre-to-centre distance is guaranteed.
  - horizontal connection of multiple bases is quick and perfect thanks to the folded-up dovetails on the left and right sides
  - extra robustness due to the folded-up edges on the outside of the base and the continuation into the inside of the base
- End border: The flush-mounting frame is equipped, both on the top and the bottom, with a dark grey, plastic end border. This border is made of PC+ASA and is joined to the flush-mounting frame using a melting process. The corners of the two end borders are equipped with rectangular openings (7.9 x 1.5 mm) each containing a multi-positional snap hook. Thanks to the snap hooks, the 4 rectangular openings ensure that the faceplate can always be attached flat to the wall, even in cases of untidy plasterwork. This works in two directions: If the flush-mounting box sticks out of the plasterwork, the multi-positional snap hooks can compensate for a 1 to 1.2 mm margin; if the flush-mounting box is sunk too deeply in the plasterwork, the snap hooks can compensate for up to a 1.8 mm margin. The end borders also have 4 round openings that ensure the correct positioning of the faceplate in relation to the central plate.
- Ambient temperature: -5 – +40 °C
- Dimensions (HxWxD): 71 x 73 x 14 mm
- Marking: CE

Unshielded RJ45 connector UTP Cat. 6, PoE++ ready, for bandwidths up to 250MHz

- Service: 4PPoE
- PoE standard: IEEE 802.3BT Type 4

- Maximum power Component (at PD): 72 W
- Maximum power Source (at PSE): 100 W
- Voltage range (at PSE): 50.0-57.0 V
- Voltage range (at PD): 42.5-57 V
- Maximum current: 860 mA
- Pairs with current: 4
- Maximum cable resistance per pair set: 12.5  $\Omega$
- Power management: Three power class levels negotiated by signature or 0.1 W steps negotiated by LLDP
- Derating of maximum cable ambient operating temperature: 10 °C (20 °F) with more than half of bundled cables at I<sub>max</sub>
- Supported cabling: Category 5
- Supported modes: Mode A, Mode B, 4-pair mode
- Impact resistance: The combination of a mechanism, a central plate and a faceplate has an impact-resistance of IK06
- Marking: CE

Adapter 9.5, single, flat for RJ connectors 650-450xx

- Impact resistance: The combination of a mechanism, a central plate and a faceplate has an impact-resistance of IK06
- Marking: CE

Finishing set for single coaxial connection and network connection RJ45, cream.

- Material central plate: The central plate is made of rigid PC and ASA. The base material is coloured in mass.
- Colour: cream (mass-dyed, approximately NCS S 1005 - Y10R, RAL 1013)
- Dismantling: To dismount simply pull the central plate off the mechanism.
- Protection degree: IP41 for the combination of a mechanism, central plate and faceplate
- Impact resistance: The combination of a mechanism, a central plate and a faceplate has an impact-resistance of IK06
- Fire safety
  - the plastic parts of the central plate are self-extinguishing (comply with a filament test of 650 °C)
  - the plastic parts of the central plate are halogen-free
- Dimensions of finishing: 45 x 45 mm (HxW)
- Dimensions (HxWxD): 44.5 x 44.7 x 8.6 mm
- Marking: CE

