

Double two-way switch, base, screw terminals and finishing set white

101-62600

4 year warranty

Compound double-pole flush-mounted two-way switch (base and finishing set). The base is equipped with screw terminals and claw fixing. This switch allows 2 lamps to be controlled from various rooms. Finishing colour: white

This article is protected by at least one patent (application). For more info on patents, see www.niko.eu/innovation.

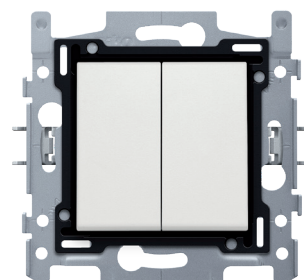
Technical data

Double two-way switch, base, screw terminals and finishing set white.

- Protection degree: IP20
- Protection degree: IP41 for the combination of a mechanism, central plate and faceplate
- The combination of a mechanism, a central plate and a faceplate has an impact-resistance of IK06
- Certification marks: CEBEC, NF
- Marking: CE

Base for a double two-way switch, 10 AX/250 Vac, screw terminals.

- Function: – switch
 - block-shaped silver contacts (cadmium-free) in the form of a cross
- Number of control buttons: 1 control button
- Maximum MCB rating: 16 A (limited by national installation rules)
- Protection degree: IP41 for the combination of a mechanism, central plate and faceplate
- Impact resistance: The combination of a mechanism, a central plate and a faceplate has an impact-resistance of IK06
- SBL load: 100 W
- Material base
 - ureumformaldehyde (UF) with high heat resistance
 - white RAL9010 (approximately)
- Flush-mounting frame
 - 1 mm-thick metal
 - galvanized on all sides after cutting, even on the cut edges
 - with 4 grooves with screw hole of 7 mm
 - with 4 screw holes (indicated by a screw symbol) with a diameter of 3 mm for mounting on panels
- Flush mounting depth: 18 mm
- Required type of flush-mounting box
 - depth: min. 40 mm (cabling space included)
 - claw/screw fixing: 60 mm

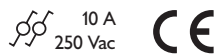


- inner diameter box: 60 mm
- multiple boxes centre distance horizontal: 71 mm
- multiple boxes centre distance vertical: 71 mm
- multiple boxes centre distance vertical: 60 mm for Belgium and France
- Fixing method
 - simple mounting in a flush-mounting box with grip surfaces
 - with claws that rotate open using screws with a combination screwhead (Pz1 or slot 1 x 5 mm), for mounting in a flush-mounting box with grip surfaces
 - engagement depth of claws: 31 mm
 - claws can be pushed back into their original position
 - claws can be easily pushed out using a screwdriver
- Centre-to-centre distance
 - Simple and quick assembly of one or more mechanisms by the indication (chalk line, laser, etc.) of the centre of the flush-mounting frame
 - vertical coupling centre-to-centre distance 60 mm by sliding several bases into each other, they lock themselves automatically
 - vertical coupling centre-to-centre distance 71 mm using pre-formed lips at the bottom, by folding the lips downwards over a length of 1 mm, the bases support each other and the centre-to-centre distance is guaranteed.
 - horizontal connection of multiple bases is quick and perfect thanks to the folded-up dovetails on the left and right sides
 - extra robustness due to the folded-up edges on the outside of the base and the continuation into the inside of the base
- End border: 4 rectangular openings (7 x 2.5 mm) which, if the flush-mounting box protrudes from the plasterwork, can compensate for a margin of between 1 and 1.2 mm, so that the faceplate can still butt up perfectly against the wall
- Wire connection
 - the sockets are fitted with cage clamps with permanent screws with combination screwheads (Pz1 or slot 1 x 5 mm)
 - every screw is provided with a screwdriver slot that prevents the screwdriver from sliding off the screwhead.
- Wire capacity
 - up to 2 x 2.5 mm² wire per terminal
- Stripping length
 - 8 mm stripping length
 - indelibly indicated at the rear side: stripping length and wiring diagram
 - indelibly indicated at the front side: terminals and switch symbol
- Lighting element
 - the base is provided with 2 rectangular recesses for lighting units
 - left and right recess: lighting units with wires can be clicked in
- Ambient temperature: -5 – +40 °C
- Dimensions (HxWxD): 71 x 73 mm
- Certification marks: CEBEC, NF
- Marking: CE

Finishing set for two-circuit switch, two-way switch + N.O. push button, double two-way switch or double N.O. or N.C. push button, white. This central plate is surrounded with a flat edge that is equipped at all 4 corners with a rectangular opening, each containing a multi-positional snap hook. The construction of the central plate ensures that the faceplate can always be attached flat to the wall, even in cases of untidy plasterwork. This works in two directions: If the flush-mounting box sticks out of the plasterwork, the multi-positional snap hooks can compensate for a 1 to 1.2 mm margin; if the flush-mounting box is sunk too deeply in the plasterwork, the snap hooks can compensate for up to a 1.8 mm margin. The flat edge around the central plate also has 4 round openings that ensure the correct positioning of the faceplate in relation to the central plate. After mounting all components (faceplate, finishing set and switch), no metal parts are visible thanks to the flat edge of the central plate.

- Function: The two keys and the intermediate plate (board) form one unit.
- Number of control buttons: 2 control buttons
- Material central plate: The central plate is made of rigid PC and ASA. The base material is mass-dyed.
- Colour: white (mass-dyed, approximately NCS S 0502 - Y50R, RAL 9010)
- Dismantling: For dismantling the central plate, the flat edge is equipped with two notches indicated by a screwdriver symbol. The central plate can easily be dismantled using a slotted screwdriver.
- Impact resistance: The combination of a mechanism, a central plate and a faceplate has an impact-resistance of IK06
- Fire safety
 - the plastic parts of the central plate are self-extinguishing (comply with a filament test of 650 °C)
 - the plastic parts of the central plate are halogen-free

- Dimensions of finishing with flat edge: 56 x 56 mm (HxW)
- Dimensions of visible area of finishing: 45 x 45 mm (HxW)
- Dimensions (HxWxD): 55.8 x 55.8 x 10.5 mm
- Certification marks: CEBEC, SEMKO, VDE, DEMKO, NF, KEMA, ÖVE
- Marking: CE



Wiring diagram

