

# Motion detector, DALI, master, 32 m, IP54, for high ceilings, for surface mounting, white

350-41761

4 year warranty

This motion detector (DALI daylight control, master) is designed for mounting on ceilings of 4 – 8 m. Standalone or as master combinable with a maximum of 10 secondary detectors. All-in-one detector installed in a quick and flexible manner thanks to the addressable DALI bus. Manual control per zone via push button. For use in storage areas, sports halls ... The detector has 2 or 3 daylight controlled zones and 1 or 2 secondary zones with on/off or dimming functionality. The detector is equipped with a potential-free relay contact for control of either light, HVAC or cut-off of voltage to the DALI luminaires.

There are four optional applications:

- mode 1: daylight control in 2 or 3 zones (DALI), 1 or 2 secondary zones (DALI) and the built-in relay contact is used for the switching of HVAC.
- mode 2: daylight control in 2 or 3 zones (DALI) and a 4th zone to switch the lighting on or off via the built-in relay contact.
- mode 3: daylight control in 2 or 3 zones (DALI), 1 or 2 secondary zones (DALI) and the built-in relay contact is used for switching off the 230 V power supply of the control gear (minimum consumption in standby).
- mode 4: daylight control in up to 3 zones for corridors with day/night mode and relay output for HVAC.

The detector is programmed using the (optional) remote control 350-41934. With the (optional) remote control 350-41935 for users, you control the luminaires in the zones simultaneously or separately.

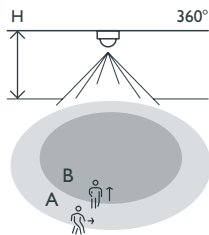
Finishing colour: white

Compatible secondary detectors: 350-41752, 350-41753, 350-41762, 350-41763

- All-in-one solution
- Large detection range of 32 m
- Can be programmed using the IR remote control 350-41934
- Fast, flexible installation thanks to the addressable DALI bus
- Manual control by zone with push-button
- Replacement of a faulty DALI frame without reprogramming
- Two or three daylight control zones
- One or two secondary zones with stop/go or variation functionality



### Detection range



H	A	B
↓	Across	Towards
4 m	Ø 16 m	Ø 9.6 m
5 m	Ø 20 m	Ø 12 m
6 m	Ø 24 m	Ø 14.4 m
7 m	Ø 28 m	Ø 16.8 m
8 m	Ø 32 m	Ø 19.2 m



DALI



master



360°



Ø 32 m from  
a height of  
8 m



4 – 8 m



surface  
mounting

**niko**

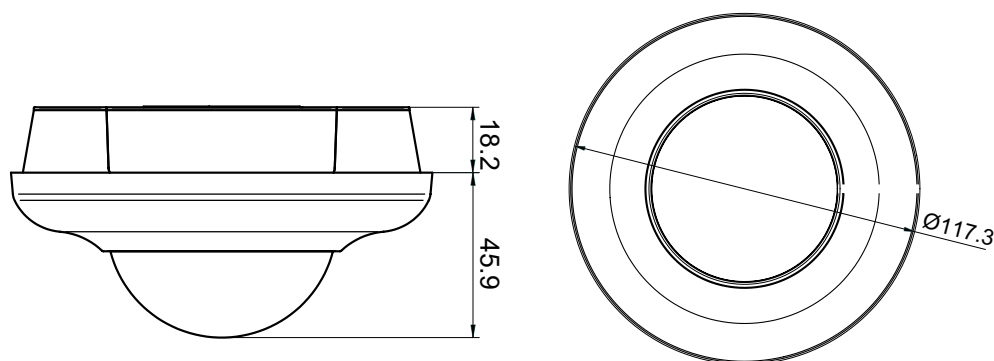
## Technical data

Article number	350-41761
Compatible secondary detectors	350-41752, 350-41753, 350-41762, 350-41763
Configuration	master
Input voltage	230 Vac $\pm$ 10 %, 50 Hz
Detector output	DALI Addressable
Maximum MCB rating	10 A (limited by national installation rules)
Relay contact	N.O. (max. 10 A), potential-free
Maximum load incandescent and halogen lamps ( $\cos\varphi = 1$ )	2300 W
Maximum load economy lamps (CFLi)	350 W
Maximum load LED lamps 230 V	350 W
Maximum load LED driver	500 VA
Maximum load electronic transformer	500 VA
Maximum capacitive load	140 $\mu$ F
Maximum switching current	165 A/20 ms – 800 A/200 $\mu$ s
Light intensity range	100 lux – 2000 lux
Number of channels	1 channel
Maximum number of dimmable zones	4
Switch-off delay	5 min – $\infty$
Detection angle	360°
Detection range (PIR)	$\varnothing$ 32 m from a height of 8 m
Ambient temperature	-5 – +50 °C
Mounting method	surface mounting
Mounting height	4 – 8 m
Dimensions (HxWxD)	117.3 x 117.3 x 64.1 mm
Protection degree	IP54
Impact resistance	IK04
Marking	CE

## Accessories

350-41936	Universal remote control for smartphone
350-41934	IR remote control for installers
350-41935	IR remote control for users

## Dimensions



Wiring diagram

