

Motion detector, 230 V, master, 32 m, IP54, for high ceilings, for surface mounting, white

350-20080

4 year warranty

This detector with one channel (360°, 10 A) is suitable for surface mounting on high ceilings and is used to switch indoor lighting on and off. The detector has a circular detection area with a diameter of 16 to 32 m that can be adjusted using the cover mask. The device with integrated light sensor can be set up as a presence or as an absence detector. The device is also equipped with the 'eco off' function, which allows the user to switch the lighting off using a connected N.O. push button without having to wait for the switch-off delay. If the lighting is not switched off manually, it will be switched off automatically once the switch-off delay has elapsed. The device has an IP54 protection degree and a potential-free contact. The set-up can be performed manually on the device itself or via a remote control. The product can be used as a stand-alone unit or in combination with a maximum of ten secondary detectors.

Finishing colour: white

Compatible secondary detectors: 350-20071, 350-20079, 350-20081

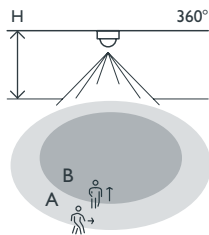
- Simple mounting
- Low power consumption (0.2 W)
- Splashproof (IP54)
- Large detection zone (up to 32 m)
- For mounting at a height of 4 to 8 m

For use in offices, school buildings, cafeterias, etc.

- Is fitted with an eco switch-off function, which allows the user to save time by overriding the switch-off delay and turning off the lighting when leaving the room. This function can also be disabled, for example in (public) premises where the user cannot turn off the lighting as a safety measure.
- Has multiple adjustable parameters: the switch-off delay, the lux value at which the lighting must turn on and the sensitivity
- Offers two configuration options: manually on the device or via the IR remote control (optional)
- Includes a lens cover mask to divide the detection zone. The cover mask can be adapted according to the desired detection range.



Detection range



H	A Across	B Towards
4 m	Ø 16 m	Ø 9.6 m
5 m	Ø 20 m	Ø 12 m
6 m	Ø 24 m	Ø 14.4 m
7 m	Ø 28 m	Ø 16.8 m
8 m	Ø 32 m	Ø 19.2 m



niko

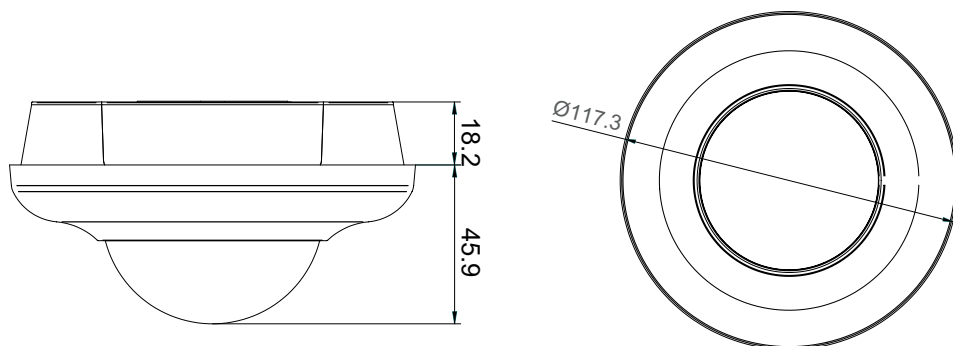
Technical data

Article number	350-20080
Compatible secondary detectors	350-20071, 350-20079, 350-20081
Input voltage	230 Vac \pm 10 %, 50 Hz
Detector output	230 V (ON/OFF)
Maximum MCB rating	10 A (limited by national installation rules)
Relay contact	N.O. (max. 10 A), potential-free
Maximum load incandescent and halogen lamps ($\cos\phi = 1$)	2300 W
Maximum load economy lamps (CFLi)	350 W
Maximum load LED lamps 230 V	350 W
Maximum capacitive load	140 μ F
Maximum switching current	165 A/20 ms – 800 A/200 μ s
Light intensity range	20 lux – 1000 lux, ∞
Number of channels	1 channel
Switch-off delay	pulse, 2 min – 1 h
Detection angle	360°
Detection range (PIR)	\varnothing 32 m from a height of 8 m
Ambient temperature	-5 – +50 °C
Mounting method	surface mounting
Mounting height	4 – 8 m
Dimensions (HxWxD)	117.3 x 117.3 x 64.1 mm
Protection degree	IP54
Marking	CE

Accessories

350-41936	Universal remote control for smartphone
350-20089	IR remote control

Dimensions



Wiring diagram

