

Socket outlet with pin earthing and shutters, flush-mounting depth 28.5 mm, base with plug-in terminals and finishing set cream

100-66605

4 year warranty

Compound socket outlet (base and finishing set) with pin earthing. The base is equipped with plug-in terminals and claw fixing. The socket outlet also has a shutters and a flush-mounting depth of 28.5 mm. Finishing colour: cream

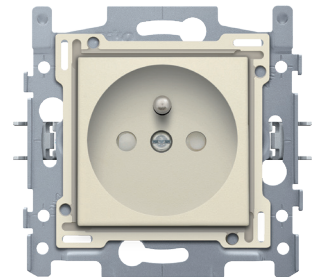
This article is protected by at least one patent (application). For more info on patents, see www.niko.eu/innovation.

Technical data

Socket outlet with pin earthing and shutters, flush-mounting depth 28.5 mm, base with plug-in terminals and finishing set cream.

The socket is equipped with a solid brass nickel-plated pin earthing, contact buses with a large contact surface that do not rest on the base in order to clasp, and plug-in terminals with releases. These releases can be operated from the front by hand or with a screwdriver. The socket of the socket is made of urea formaldehyde (UF) light grey RAL7035. The base is highly heat resistant: it does not melt when exposed to high temperatures, as opposed to thermoplasts. All plug-in terminals are located at the top and can hold up to 2x2.5mm² wire. The stripping length (14mm) of the wires is indelibly marked at the back of the base. When mounting in a flush-mounting box with grip surfaces, use claws that can be rotated open using screws with a slotted screwhead (Pz2 slot 1x5.5 mm). The claws, which have a 31 mm engagement depth, turn back completely when loosened. The mounting frame has a metal thickness of 1 mm and is galvanized on all sides after cutting, including the cut sides. The flush-mounting frame has 4 entry slots on the horizontal and vertical axis for mounting in flush-mounting boxes with screws. These run-in slots have a 7mm screw hole. For mounting on panels, the flush-mounting frame is provided with 4 screw holes (indicated by a screw symbol) with a diameter of 3 mm. The centre of the flush-mounting frame is marked (chalkline, laser, etc.), both horizontally and vertically, so that the installation of one or more sockets can be done quickly and easily. On the right and left side, the flush-mounting frame has folded-up dovetails, so that horizontal connection of several sockets is quick and perfect. The folded-up edges on the outside of the flush-mounting frame and their continuation to the inside lend an additional robustness to the socket outlet. The vertical coupling of sockets, centre distance 60 mm, is done is carried out by telescoping the flush-mounting frames. These lock automatically. For the vertical coupling of sockets, centre distance 71 mm, the flush-mounting frame is equipped with two pre-formed lips at the bottom. By folding these lips down over a length of 1 mm, this socket outlet rests perfectly on the one below and the centre distance of 71 mm is guaranteed. The 4 rectangular openings (7 x 2.5 mm) in the flush-mounting frame can compensate for a margin of 1 to 1.2 mm if the flush-mounting box protrudes beyond the plasterwork. In the case of such a margin, the faceplate can still butt up perfectly against the wall.

The central plate is mounted by means of a screw with mixed screw head (Pz1 slot 1x5.5mm) fixed to a recessed socket. This central plate is surrounded by a flat border which is provided at the 4 corners with a rectangular opening in which a multi-positional snap hook is located. The construction of the central plate ensures that the faceplate can always be attached flat to the wall, even in cases of untidy plasterwork. This works in two directions: If the flush-mounting box sticks out of the plasterwork, the multi-positional snap hooks can compensate for a 1 to 1.2 mm margin; if the flush-mounting box is sunk too deeply in the plasterwork, the



snap hooks can compensate for up to a 1.8 mm margin. The flat edge of the central plate also has 4 round openings that ensure the correct positioning of the faceplate in relation to the central plate. The back of the central plate is equipped with a shutters. This allows contact to be made after simultaneous introduction of the pins of a plug but prevents contact from being made if only 1 pin is introduced or if the two pins are not introduced simultaneously. After mounting all components (faceplate, central plate, overvoltage module and socket outlet), no metal parts are visible thanks to the flat edge of the central plate. The combination of a socket outlet, an overvoltage module, a central plate with shutters and the faceplate has a protection degree IP41. The plastic parts of the central plate comply with a filament test of 650°C, and they are halogen-free. The central plate is made of rigid PC+ASA. The raw material is coloured in the mass, cream (approximately RAL1013). After mounting, an impact resistance of IK06 is guaranteed. Dimensions central plate with flat edge: 56x56mm, dimensions central plate visible part: 45x45mm. Flush-mounting depth socket outlet= 28.5 mm. Surface-mounting height= max 8.5 mm. CEBEC approved

- Protection degree: IP20
- Protection degree: IP41 for the combination of a mechanism, central plate and faceplate
- The combination of a mechanism, a central plate and a faceplate has an impact-resistance of IK06
- Certification marks: CEBEC
- Marking: CE

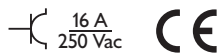
Base for socket outlet with pin earthing and shutters, flush-mounting depth 28.5 mm, 16 A/250 Vac, plug-in terminals.

- Protection degree: The combination of a mechanism, a central plate and a faceplate has a protection degree of IP21-D
- Impact resistance: The combination of a mechanism, a central plate and a faceplate has an impact-resistance of IK06
- Material base
 - ureumformaldehyde (UF) with high heat resistance
 - white RAL9010 (approximately)
- Flush-mounting frame
 - 1 mm-thick metal
 - galvanized on all sides after cutting, even on the cut edges
 - with 4 grooves with screw hole of 7 mm
 - with 4 screw holes (indicated by a screw symbol) with a diameter of 3 mm for mounting on panels
- Required type of flush-mounting box
 - depth: min. 40 mm (cabling space included)
 - claw/screw fixing: 60 mm
 - inner diameter box: 60 mm
 - multiple boxes centre distance horizontal: 71 mm
 - multiple boxes centre distance vertical: 71 mm
 - multiple boxes centre distance vertical: 60 mm for Belgium and France
- Fixing method
 - simple mounting in a flush-mounting box with grip surfaces
 - with claws that rotate open using screws with a combination screwhead (Pz2 or slot 1 x 5.5 mm), for mounting in a flush-mounting box with grip surfaces
 - engagement depth of claws: 23.5 mm
 - claws turn back completely when loosened
- Centre-to-centre distance
 - Simple and quick assembly of one or more mechanisms by the indication (chalk line, laser, etc.) of the centre of the flush-mounting frame
 - vertical coupling centre-to-centre distance 60 mm by sliding several bases into each other, they lock themselves automatically
 - vertical coupling centre-to-centre distance 71 mm using pre-formed lips at the bottom, by folding the lips downwards over a length of 1 mm, the bases support each other and the centre-to-centre distance is guaranteed.
 - horizontal connection of multiple bases is quick and perfect thanks to the folded-up dovetails on the left and right sides
 - extra robustness due to the folded-up edges on the outside of the base and the continuation into the inside of the base
- End border: 4 rectangular openings (7 x 2.5 mm) which, if the flush-mounting box protrudes from the plasterwork, can compensate for a margin of between 1 and 1.2 mm, so that the faceplate can still butt up perfectly against the wall
- Wire connection
 - contact buses fitted with plug-in terminals for clamping the wires
- Wire capacity
 - all connection terminals at the top side of the base
 - up to 2 x 2.5 mm² wire per terminal

- Stripping length
 - 14 mm stripping length
 - indelibly indicated at the rear side: stripping length
- Ambient temperature: -5 – +40 °C
- Dimensions (HxWxD): 71 x 73 mm
- Certification marks: CEBEC
- Marking: CE

Finishing set for socket outlet with pin earthing and shutters, flush-mounting depth 28.5 mm, cream. This central plate is surrounded with a flat edge that is equipped at all 4 corners with a rectangular opening, each containing a multi-positional snap hook. The construction of the central plate ensures that the faceplate can always be attached flat to the wall, even in cases of untidy plasterwork. This works in two directions: If the flush-mounting box sticks out of the plasterwork, the multi-positional snap hooks can compensate for a 1 to 1.2 mm margin; if the flush-mounting box is sunk too deeply in the plasterwork, the snap hooks can compensate for up to a 1.8 mm margin. The flat edge around the central plate also has 4 round openings that ensure the correct positioning of the faceplate in relation to the central plate. After mounting all components (faceplate, finishing set and switch), no metal parts are visible thanks to the flat edge of the central plate.

- Material central plate: The central plate is made of rigid PC and ASA. The base material is coloured in mass.
 - Colour: cream (coloured in mass, approximately NCS S 1005 - Y10R, RAL 1013)
 - Dismantling: To dismount simply unscrew the central plate.
 - Shutters: Equipped with shutters. This means that contact is made after simultaneous introduction of the pins of a plug but prevents contact from being made if only 1 pin is introduced or if the two pins are not introduced simultaneously.
 - Protection degree: The combination of a mechanism, a central plate and a faceplate has a protection degree of IP21-D
 - Impact resistance: The combination of a mechanism, a central plate and a faceplate has an impact-resistance of IK06
 - Fire safety
 - the plastic parts of the central plate are self-extinguishing (comply with a filament test of 650 °C)
 - the plastic parts of the central plate are halogen-free
 - Dimensions of finishing with flat edge: 56 x 56 mm (HxW)
- Dimensions of visible area of finishing: 45 x 45 mm (HxW)
- Dimensions (HxWxD): 55.8 x 55.8 x 25.6 mm
 - Certification marks: CEBEC, NF
 - Marking: CE



Wiring diagram

