

Socket outlet with voltage indication, pin earthing and shutters, flush-mounting depth 28.5 mm, base and finishing set, plug-in terminals, blue

196-66622

4 year warranty

Socket outlet with voltage indication, pin earthing and shutters. This socket outlet has a flush-mounting depth of 28.5 mm and is equipped with a plug-in terminals and claw fixing. Includes finishing set. A faceplate in the colour of your choice must be ordered separately. Finishing colour: blue.

Wires that remain fixed:

- wire is fixed firmly due to the high-quality plug-in terminal with a long life span, tested according to the norm
- since the conductor release on the mechanisms is located at the front, the wiring cannot push on the release when you place it in the flush-mounting box.

Faster and easier installation:

- all connections terminals are located at the top of the base:
 - to ensure all wires can be cut and stripped at the same length
 - to guarantee more space under the mechanism, so you can easily fold the wires and place the mechanism in the flush-mounting box without the wiring pushing it back up.

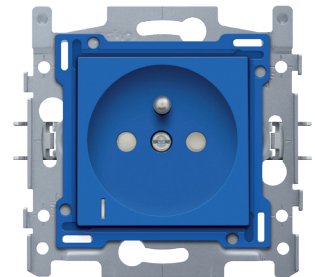
Niko quality:

- long life span since the plug-in terminal stays within the limits of the norm during a temperature and power drop
- metal base is held firmly in place, even on uneven walls, doesn't break and is not subject to stress cracking (small ruptures)
- firm metal claws with a large engagement depth (31 mm) remain fixed when mounted and can be screwed tightly to ensure that the socket outlets can remain fixed in the wall for a longer time and to avoid the mechanisms should become warped

Technical data

Socket outlet with voltage indication, pin earthing and shutters, flush-mounting depth 28.5 mm, base and finishing set, plug-in terminals, blue.

- Colour: The cover of the socket outlet and the central plate are coloured in mass, blue (approximately RAL 5005) and ensures that after the removal of the central plate, the socket outlet function remains clearly indicated. This is applicable in places where there are many circuits with specifically defined functions, for example, emergency power supplies in hospitals. The central plate is made of rigid PC
- Fixing method
 - with claws that can be rotated open using screws with a slotted screw head (slot 0.8 x 5 mm), for mounting in a flush-mounting box with grip surfaces
 - depth of engagement of claws: 31 mm
 - claws turn back completely when loosened
- Wire connection
 - contact buses fitted with plug-in terminals for clamping the wires
- Stripping length



niko

- 14 mm stripping length
- indelibly indicated at the rear side: stripping length
- Fire safety
 - self-extinguishing plastic components (central plate and base cover): complies with a filament test of 650 °C
 - halogen-free
- Protection degree: The combination of a mechanism, a central plate and a faceplate has a protection degree of IP21-D
- The combination of a mechanism, a central plate and a faceplate has an impact-resistance of IK06
- Marking: CE



Wiring diagram

